

BILL OF MATERIALS

USES OF UTILITY SHED

ITEM	SIZE	PCS.	AMOUNT
CONCRETE FLOOR	8'-0" x 8'-0" x 4"	1	CU. YD
CONCRETE	3/8" x 6"	14	EA.
ANCHOR BOLTS			
OPTIONAL WOOD FLOOR			
JOISTS	2x4x8'-0"	5	F.B.M.
JOIST HEADER	2x6x8'-0"	16	F.B.M.
END JOIST & SKIDS	4x4x8'-0"	54	F.B.M.
FLOORING, EXTERIOR PLYWOOD	3/8" x 4'-0" x 8'-0"	2	SHEETS
EYE BOLTS	3/8" x 6"	2	EA.
NAILS, COMMON	1/2" x 6"	16d	LBS.
NAILS, GALVANIZED	6d	6d	LBS.
2 REAR PANELS			
STUDS	2x4x6'-0"	4	F.B.M.
SILL, GIRTS, & PLATE	2x4x4'-0"	10	F.B.M.
SASH BLOCKING	2x4x2'-0"	2	F.B.M.
SIDING, EXTERIOR PLYWOOD	3/8" x 4'-0" x 8'-0"	2	SHEETS
BATTEN, EXTERIOR PLYWOOD	3/8" x 3"x 6'-0"	1	STRIP
WINDOW	1'-8" x 3'-0"	1	EA.
NAILS, COMMON	1 1/4" LBS.	1 1/4	LBS.
NAILS, GALVANIZED	3/4" LB.	3/4	LB.
4 SIDE PANELS			
GIRTS & SILL	2x4x4'-0"	10	F.B.M.
FRONT & CENTER STUDS	2x4x8'-0"	6	F.B.M.
REAR STUDS	2x4x6'-0"	2	F.B.M.
SIDING, EXTERIOR PLYWOOD	3/8" x 4'-0" x 8'-0"	4	SHEETS
BATTENS, EXTERIOR PLYWOOD	3/8" x 3"x 6'-0"	2	STRIPS
RAFTER TRIM, FRONT	3/8" x 4"x 2'-8"	2	STRIPS
RAFTER TRIM, REAR	3/8" x 4"x 8"	2	STRIPS
RAILS, COMMON	16d	2	LBS.
RAILS, GALVANIZED	6d	2	LBS.
1 FRONT PANEL			
STUDS	2x4x8'-0"	3	F.B.M.
SILL, GIRTS, & PLATE	2x4x4'-0"	5	F.B.M.
HEADER	2x6x4'-0"	1	F.B.M.
SASH BLOCKING	2x4x4'-0"	3	F.B.M.
SIDING, EXTERIOR PLYWOOD	3/8" x 4'-0" x 8'-0"	1	SHEET
WINDOW	2'-5" x 3'-0"	1	EA.
NAILS, COMMON	16d	1	EA.
NAILS, GALVANIZED	6d	1	EA.
1 FRONT PANEL - SLIDING DOOR			
STUDS	2x4x8'-0"	3	F.B.M.
PLATE	2x4x4'-0"	3	F.B.M.
HEADER	2x6x4'-0"	4	F.B.M.
SIDING, EXTERIOR PLYWOOD	3/8" x 2"x 7'-5"	1	STRIP
	3/8" x 5"x 7'-5"	1	STRIP
	3/8" x 7"x 4'-0"	1	STRIP
	3/8" x 4'-0" x 8'-0"	1	SHEET
DOOR, EXTERIOR PLYWOOD	8'-0" LONG	1	EA.
SLIDING DOOR TRACK	3" DIA WHEEL	2	EA.
SLIDING DOOR TROLLEYS	2" DIA WHEEL	2	EA.
DOOR STAY ROLLERS	16d	2	EA.
NAILS, COMMON	1/2" LB.	1/2	LB.
NAILS, GALVANIZED	3/4" LB.	3/4	LB.
2 ROOF PANELS			
RAFTERS	2x4x12'-0"	4	F.B.M.
GIRTS	2x4x4'-0"	14	F.B.M.
FACIA, FRONT	3/8" x 4"x 8'-0"	1	SHEET
FACIA, REAR	3/8" x 4"x 8'-0"	1	SHEET
SOFFIT, FRONT	3/8" x 2'-7" x 8'-0"	1	SHEET
SOFFIT, REAR	3/8" x 7"x 8'-0"	1	SHEET
NAILS, COMMON	1 1/2" LBS.	1 1/2	LBS.
NAILS, GALVANIZED	3/4" LBS.	3/4	LBS.
NAILS, ALUMINUM	2" SCREW SHANK	100	EA.
ROOFING, ALUMINUM	BV CRIMP	2	SHEETS
	.024" x 50" x 12'-0"	4	EA.
FRAMING ANCHORS (4X)	18 GAUGE	4	EA.
FRAMING ANCHORS (4L)	18 GAUGE	4	EA.

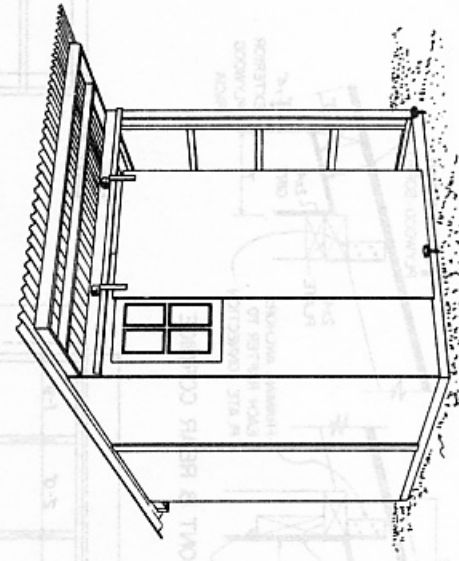
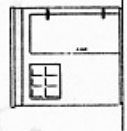
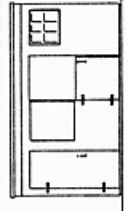
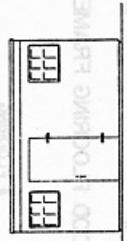
NOTE
BATTENS, RAFTER TRIM, SOFFITS, & FACIAS TO BE CUT FROM 1 SHEET OF 3/8" x 4'-0" x 8'-0" EXTERIOR PLYWOOD & WASTE FROM THE SIDING USED ON THE SIDE & REAR PANELS

I. GENERAL
1. ALL JOINTS MAY BE CALLED TO PROVIDE A MORE WEATHER PROOF STRUCTURE.
2. DOORS MAY BE SLIDING OR SWING TYPE.
3. CONCRETE OR WOOD FLOOR SHOWN ON SHEET No. 2

II. TOOL SHED 8'-0" x 8'-0" (SHOWN ABOVE)
III. 4-H BIRD POULTRY HOUSE 8'-0" x 8'-0"
1. USE 2" INSULATION WITH VAPOR BARRIER IN WALLS & CEILING.
2. INTERIOR FINISH SHOULD BE A DENSE, EASILY CLEANED MATERIAL.
3. USE HOPPER TYPE WINDOWS FOR VENTILATION.
4. PROVIDE SCREENS FOR DOORS & WINDOWS. (1" MESH DESIRED)

IV. HORSE STALL OR SHEEP PEN 8'-0" x 16'-0"
1. STALL AREA INTERIOR, FINISHED WITH 1/2" PLYWOOD
2. PLANK FLOOR RECOMMENDED.

V. SHOP



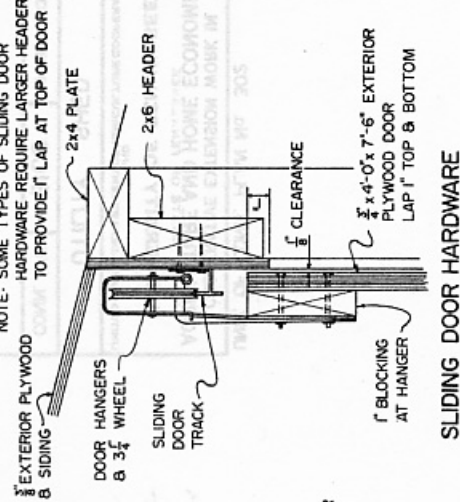
PERSPECTIVE

UNIV. OF CONN. PLAN No. 302

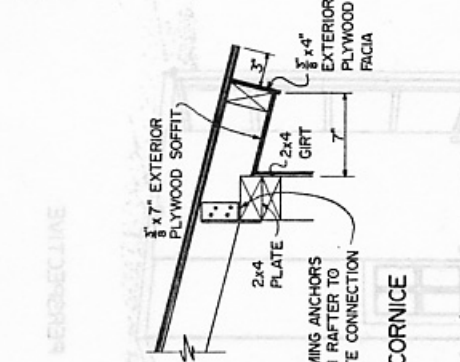
COOPERATIVE EXTENSION WORK IN AGRICULTURE AND HOME ECONOMICS
STATE OF TENNESSEE
UNIVERSITY OF TENNESSEE
AND
UNITED STATES DEPARTMENT OF AGRICULTURE COOPERATING

UTILITY SHED	6100	SHEET 1 OF 2
--------------	------	--------------

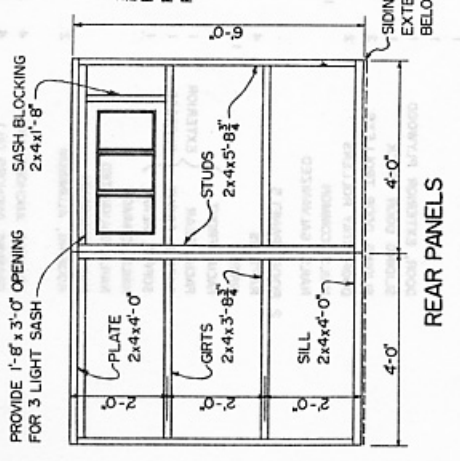
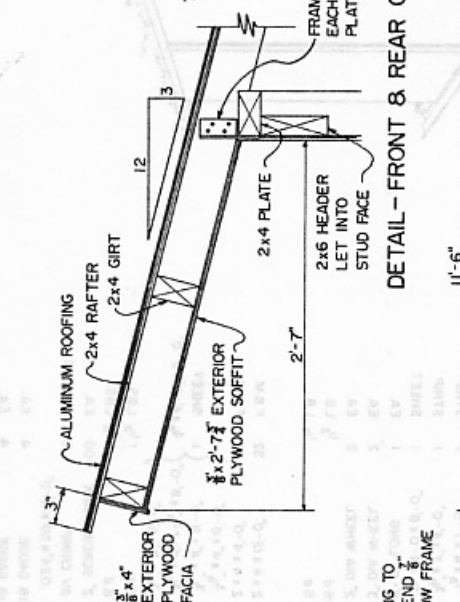
NOTE: SOME TYPES OF SLIDING DOOR HARDWARE REQUIRE LARGER HEADERS TO PROVIDE LAP AT TOP OF DOOR



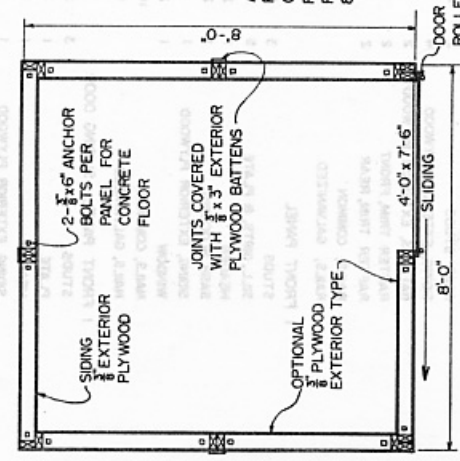
SLIDING DOOR HARDWARE



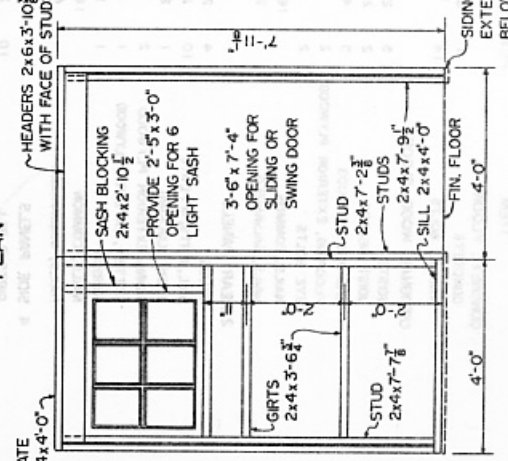
DETAIL - FRONT & REAR CORNICE



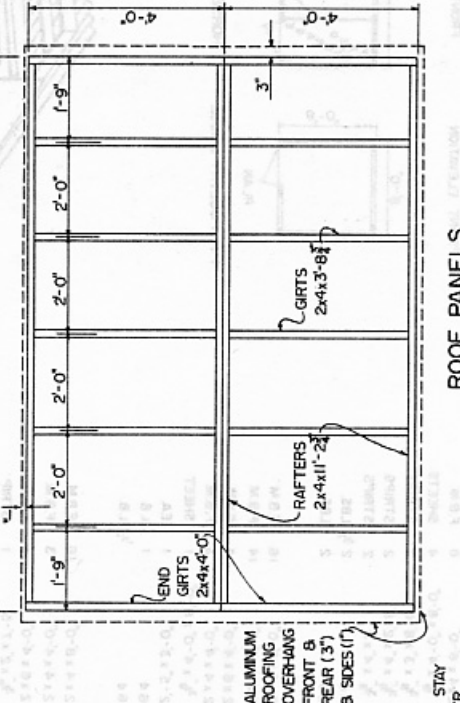
REAR PANELS



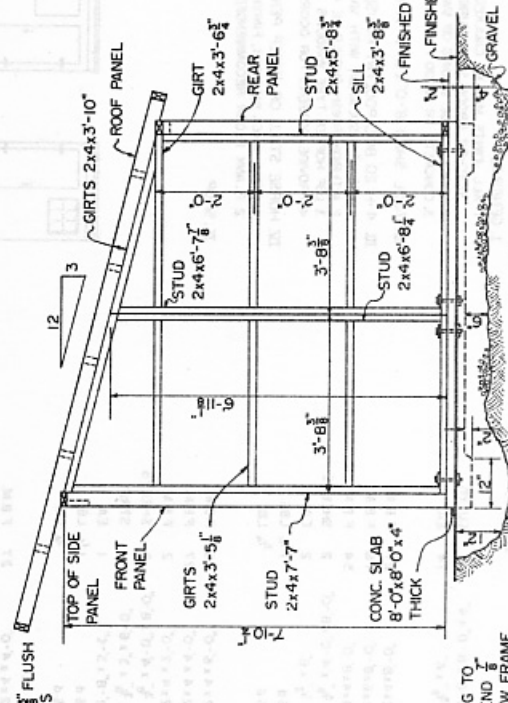
PLAN



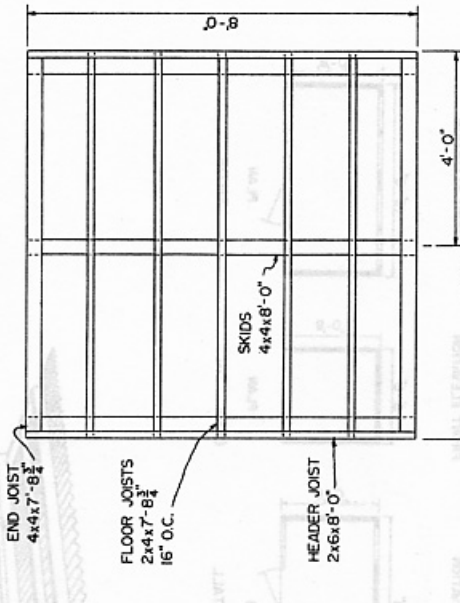
FRONT PANELS



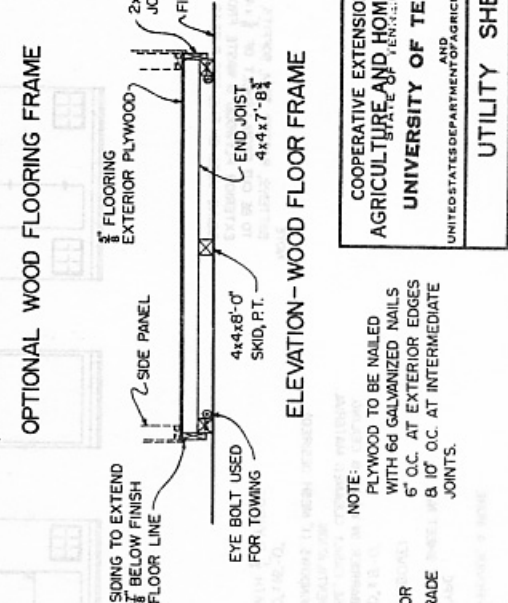
ROOF PANELS



SIDE ELEVATION SHOWING PANELS



OPTIONAL WOOD FLOORING FRAME



NOTE: PLYWOOD TO BE NAILED WITH 6d GALVANIZED NAILS 6" O.C. AT EXTERIOR EDGES & 10" O.C. AT INTERMEDIATE JOINTS.

COOPERATIVE EXTENSION WORK IN AGRICULTURE AND HOME ECONOMICS
UNIVERSITY OF TENNESSEE
AND
UNITED STATES DEPARTMENT OF AGRICULTURE COOPERATING